

Reliable Results

Parameter	Linearity Range	Repeatability	Carryover
WBC	(1.0~200)X10 ⁹ /L	<2.5% (3.5~15.0)X10 ⁹ /L	>0.5%
RBC	(0.00~8.00)X10 /L	>1.5%(3.50~6.00)X10 ¹² /L	<0.5%
HGB	20 g/L ~ 250g/L	>1.5%(100 g/L ~ 180g/L	0.6%
PLT	(20~5000)X10 ⁹ /L	<6.0%(100~149)X10 ⁹ /L <1.0%(80FI~110FI)	>1.0%
MCV		<4.0%(150~500)X10 ⁹ /L	

Specifications

Principle	Electric impedance for WBC, RBC Colorimetry for HGB
Quality Control	X-B Floating mean L-J Quality control
Throughput	60 samples / h
Storage	300,000 Test Records
Sample Volume	9uL (Whole blood mode) 20uL (Pre-diluted mode)
Sample Type	Capillary whole blood, Venous Whole Blood
Calibration	Manual, Calibrator, Fresh blood
Graphic Parameters	22 Parameters + 3 Histograms
Dimensions	280 mm (L) * 460mm (W) * 400 mm (H)
Weight	18.0 KG
Hematology Reagents	Diluent A, Lyse, Probe Cleanser



Product Features

Accurate Test Result

- Multiple research parameters
- Accurate hardware
- High accuracy and precision
- Minimum sample consumption

Maintenance Intelligent

- Automatic and manual maintenance
- Multiple self - checking Functions
- Modular - design structure
- Anti-blocking and one click removal design



Integrated Report

- Support manual input of CRP, SAA, ESR etc. parameters and results, and merge and print them on the same report.

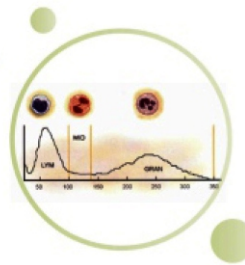
Friendly PC Software Workstation

- A computer workstation for editing and printing results.

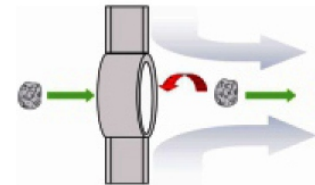
Technical Advantages

Electrical Impedance - Precise Cell Counting Method

- The analyser uses Coulter principle to detect number of Leukocyte, Erythrocytes and platelets as well as their volume distribution.
- Blood cells will create an pulse signal in the electrical circuit when a cell suspended in the electrolyte solution passes through the aperture.



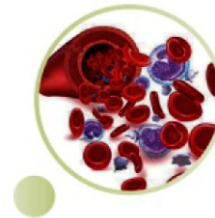
- The instrument draws histograms to count the number of different cells based on the size and quantity of pulse signals, achieving three classifications of white blood cells.



Colorimetric Test - Haemoglobin Concentration

Colorimetric Test - Haemoglobin Concentration

- Hemoglobin is the main component of red blood cells and serves as the transporter for oxygen and carbon dioxide in the blood. Hemoglobin concentration (Hb) is usually reported as grams of hemoglobin per deciliter of blood (g/dL).
- Colourimetric is used to measure hemoglobin concentration. Non-Cyanide lyse reagent secures researchs' health.



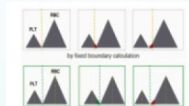
Software Algorithm - Intelligent and Accurate Results

Digital filtering algorithm

- Automatically identify interference signal, correct the symmetry of RBC histogram, therefore enhance the accuracy of RDW/MCV

Floating boundary technology

- A method that can identify the boundary between RBC and PLT flexibly and excludes the interference of small red blood cells.



Test parameters

WBC group (7)

WBC, Lym%, Lym#, Mid%, Mid#, Gran%, Gran#

RBC group (8)

RBC, HGB, HCT, MCV, MCH, MCHC, RDW-SD, RDW-CV

PLT group (7)

PLT, MPV, PDW-CV, PDW-SD, PCT, P-LCC, P-LCR

22
Parameters

White Cell Biomedicals Pvt. Ltd.

8-3-169/97, Sidhartha Nagar Colony, S.R. Nagar, Hyderabad - 500038, Telangana.

Mob. : +91 9885331905 | Email : whitecellbiomedicals@gmail.com